

Name _____

Date _____

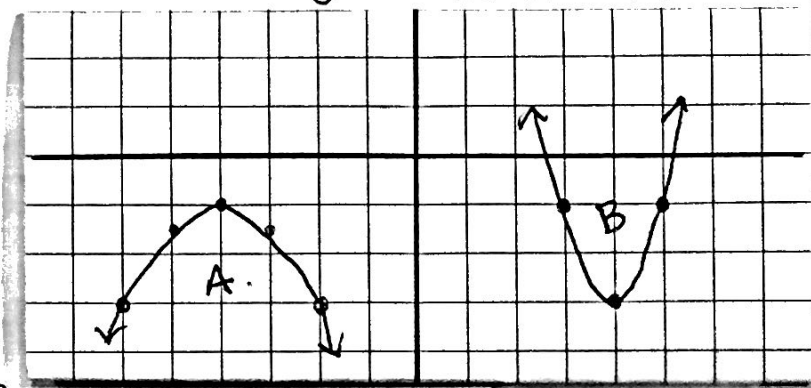
Block _____

Quadratics Practice

1) Graph $y = -2(x-1)^2 + 6$

2) Graph $y = (x+2)^2 - 5$

3) Write the equation for the graphs



4) Give the vertex for each parabola

A. $y = \frac{1}{3}(x+6)^2 - 1$

C. $y = (x+1)^2 + 4$

B. $y = -3(x-2)^2 - 6$

D. $y = x^2 + 2$

5) Tell whether each parabola opens up or down

A. $y = 3x^2 + 5x + 6$

B. $y = -2(x-6)^2 + 7$

C. $y = \frac{1}{5}(x+2)^2$

D. $y = 3x^2$

6) Draw a 2.5" line with 1/8" markings

